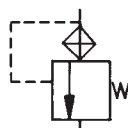


I.S.O. SYMBOL

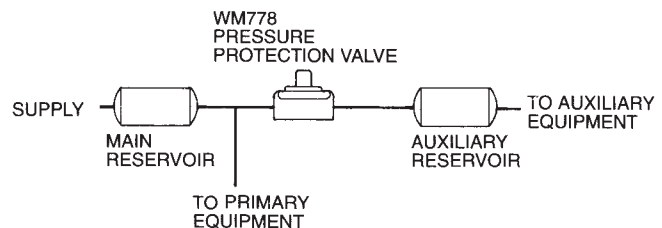


WM778 SERIES PRESSURE PROTECTION VALVE

70 PSI HOLDBACK

DESCRIPTION

The WM778 series are normally closed pressure protection valves often used when an auxiliary system is supplied off a primary system. The valve will protect primary system air pressure by reclosing automatically at 70 PSI (482 kPa). The WM778 is available with or without a filter installed in its inlet port. The filter will reduce ingestion of contaminants.



SPECIFICATIONS

PORT SIZE	1/4-18 NPTF
MAXIMUM OPERATING PRESSURE	150 PSI (1034 kPa)
OPERATING TEMPERATURE.....	-40°F to 180°F (-40°C to 82°C)
MOUNTING	By Inlet and Outlet Ports
MOUNTING ATTITUDE	Optional
MATERIALS: Body	Die Cast Zinc Alloy
Cover	Zinc-Plated Steel
Diaphragm	Fabric-Reinforced Buna N
WEIGHT	9.5 oz. (0,3 kg)